

SWATCH CHART & USAGE GUIDE

ULTRA HOT[®]

INTENSE SEMI-PERMANENT
FASHION COLOUR

Aloxxi[®]



ULTRA HOT[®]

Aloxxi.

INTENSE SEMI-PERMANENT FASHION COLOUR

- Intermixable shades offer endless possibilities.
- Advanced Direct Dye Technology binds to the hair for more even colour results that fade on tone.



APPLICATION & DEVELOPMENT TIME:

COLOUR OBJECTIVE	APPLICATION	DEVELOPMENT TIME
Intense fashionable colour	Pre-lighten hair to pale yellow prior to applying the desired ULTRA HOT shade. Apply the ULTRA HOT shade directly onto damp hair.	10 to 20 minutes depending on the intensity of the desired colour result.
Pastel colours	Pre-lighten hair to pale yellow prior to applying the desired ULTRA HOT shade. Mix the desired ULTRA HOT colour with ULTRA HOT Clear. Apply the ULTRA HOT mix directly onto damp hair.	10 to 20 minutes. Check colour results every 10 minutes until desired intensity is achieved.
Shine intensifier on natural or colour treated hair	Apply ULTRA HOT directly onto damp hair.	10 to 40 minutes. Check results every 10 minutes until desired shine is achieved.

INSTRUCTIONS FOR USE:

NO DEVELOPER REQUIRED.
Apply in small sections to ensure maximum saturation.

PRE-TREATMENT

Apply Aloxxi ColourPrime Pre-Color Treatment to the hair prior to all colour applications to cleanse, equalize porosity and protect the scalp. This 3-in-1 colour extender delivers 2.5x more even color absorption than untreated hair to optimize colour retention.

REMOVAL & POST TREATMENT

ColourLock Post-Color Finisher to cleanse and condition the hair and close the cuticle. Leave on for 2 minutes and then rinse with luke-warm to cool temperature of water. Follow with your choice of Aloxxi CARE and STYLE products.

TIPS

- Dilute the intensity of any shade by using ULTRA HOT Clear as a mixer
- Add a smokey effect to any shade by using ULTRA HOT Black as a mixer

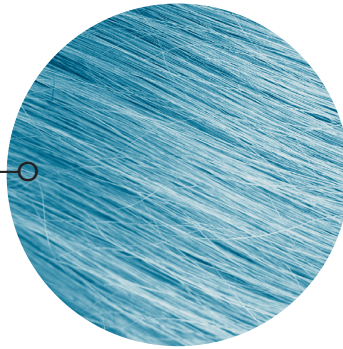


COLOUR MIXES

Custom blends to play with by International Artistic
Team Member Sam LaBella @samlabelahair
Show us your ULTRA HOT creations! @aloxihair

ROBIN'S EGG

10g CLEAR
+
2g NEON TEAL
+
1 CHIP BLUE



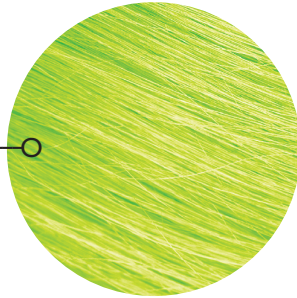
BLACK PINK

20g PINK
+
20g CLEAR
+
2g BLACK



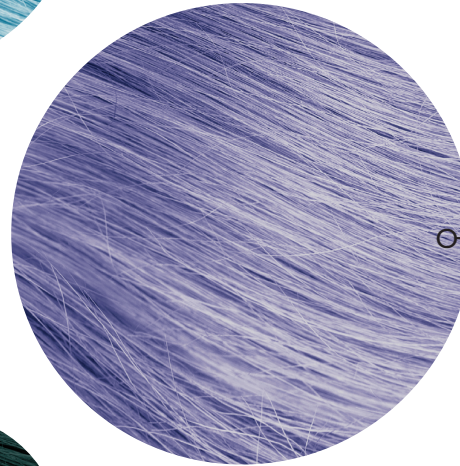
LEMONGRASS

15g NEON GREEN
+
1 CHIP RED



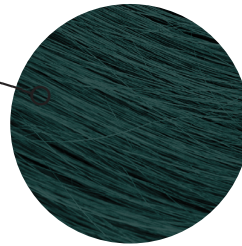
PERIWINKLE

10g CLEAR
+
1g BLUE
+
4g PINK



EMERALD

10g GREEN
+
2g BLACK



APRICOT

10g CLEAR
+
1g RED
+
1g YELLOW



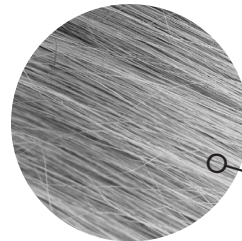
BURGUNDY

5g RED
+
5g BLACK



FOG

10g CLEAR
+
2g BLACK



Colour that Ignites

Turn up the heat, and creativity, with Aloxxi's ULTRA HOT® Semi-Permanent Fashion Colour. Whether you desire intense vibrant fashion colour, pastels or smokey results, these 10 versatile, direct dyes can be intermixed for easy, customized colour results with incredible shine!

ADVANCED DIRECT DYE TECHNOLOGY:

Acidic formulation with positively charged Cationic Dyes that attract to pre-lightened hair for vibrant long-lasting results.

BENEFITS:

- 10 intermixable shades offer endless fashion colour possibilities
 - Easy to apply and spread
 - Acidic formulation
- Compact assortment for minimal investment and to maximize dispensary space
- ULTRA HOT® Clear can be used to create pastel shades or as a shine intensifier on natural or colour treated hair
 - ULTRA HOT® Black can be used to create smokey / lived in colour results
 - FREE of parabens, sulfates, gluten

The colour possibilities are endless

Aloxxi

©2023 Aloxxi International Corporation • 13062 Saticoy St. • N. Hollywood, CA 91605 U.S.A.

TECHNICAL HOTLINE: 1-877-425-6994 • aloxxi.com



Item #: LTUHCHT23

